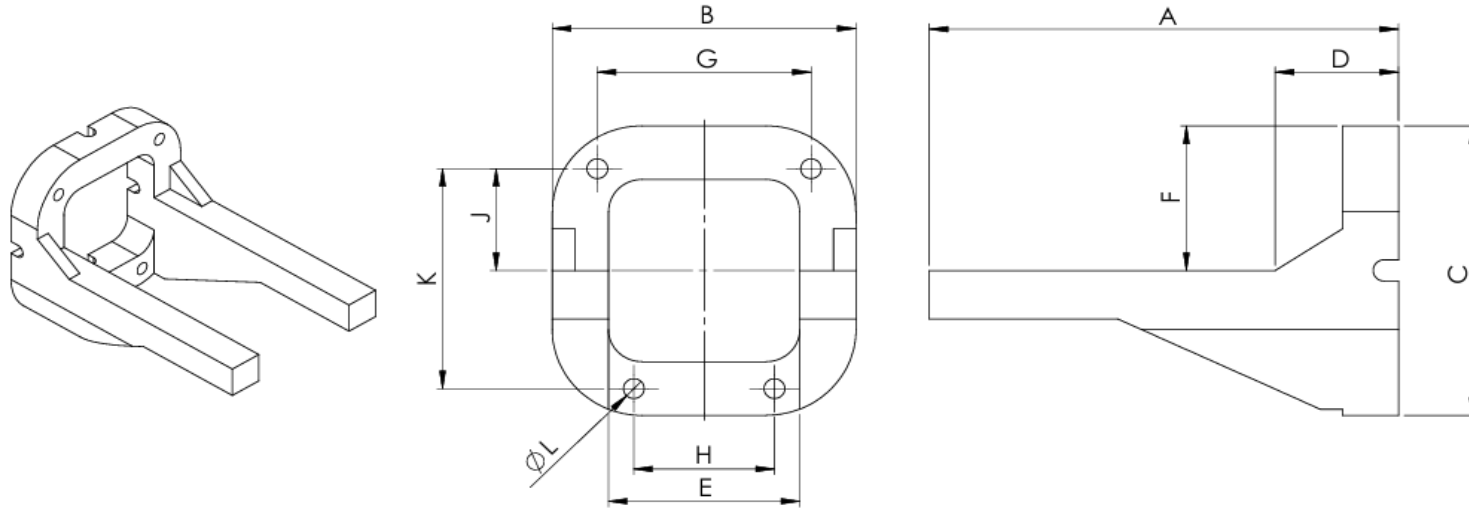


Glass Filled Nylon Engine Mount Dimensions



For Engine Size	Dimensions in millimetres										
	A	B	C	D	E	F	G	H	J	K	L
19-30	58	48	48	16	30*	24	32	32	16	32	3.5
30-45 Std	52	52	52	16	33*	26	35	35	17.5	35	3.5
30-45 Long	84	52	54	22	34	27	38	25	20	41	3.7
45-60 Std	61	61	59	17	39*	29	38	38	19.5	39	3.7
45-60 Long	100	63	63	31	39	31	41	25	25	46	3.7
61-91 Long	100	68	68	31	44	35	48	32	24	52	3.7

These dimensions are provided in good faith however we accept no liability for errors or deviations

* The orifice in the rear of the standard length mounts is circular - dim 'E' is a diameter

Dim 'E' is also the nominal width between the engine bearers